



## 7A SUNNYDALE VILLAS DURLSTON ROAD

SWANAGE, BH19 2HY

£600,000  
FREEHOLD

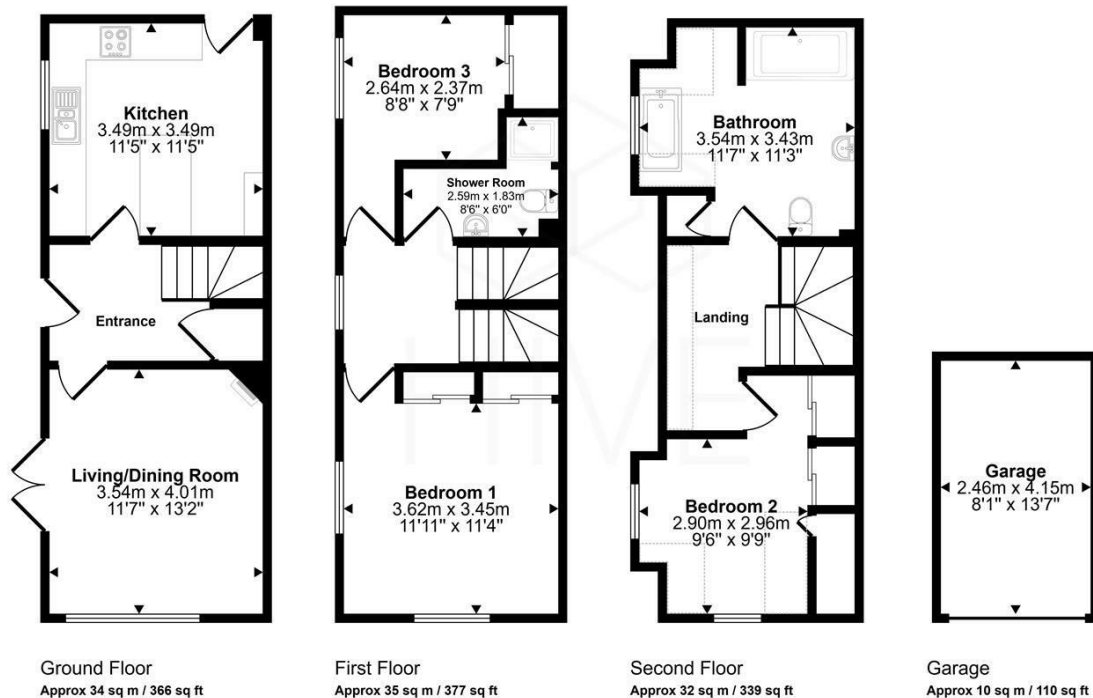
Three-bedroom, three-storey semi-detached home with a generous garden in a highly sought-after Swanage location, just moments from Durlston Country Park



HIVE

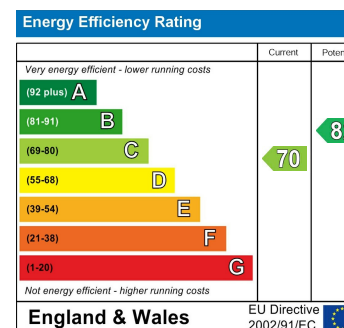
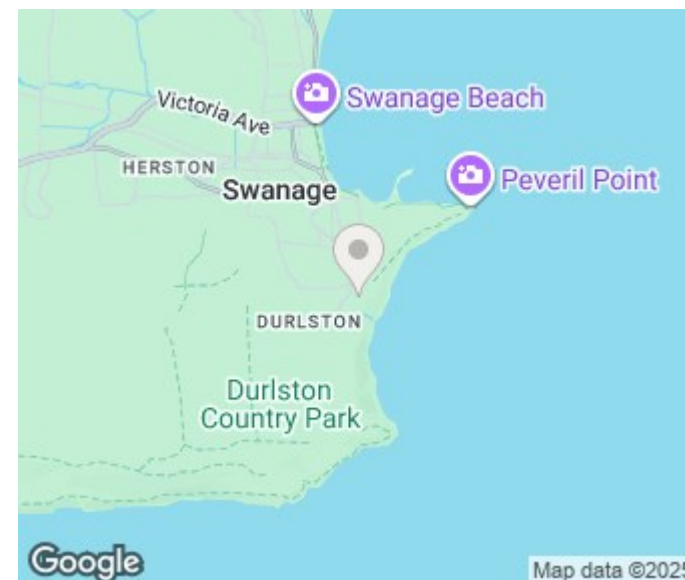


Approx Gross Internal Area  
111 sq m / 1192 sq ft



Denotes head height below 1.5m

This floorplan is only for illustrative purposes and is not to scale. Measurements of rooms, doors, windows, and any items are approximate and no responsibility is taken for any error, omission or mis-statement. Icons of items such as bathroom suites are representations only and may not look like the real items. Made with Made Snappy 360.



Agents Note: Whilst every care has been taken to prepare these particulars, they are for guidance purposes only. All measurements are approximate and are for general guidance purposes only and whilst every care has been taken to ensure their accuracy, they should not be relied upon and potential buyers/tenants are advised to recheck the measurements

Hive & Partners  
Unit F1  
Arena Business Centre 9  
Nimrod Way  
Ferndown  
BH21 7UH

01202 122 002  
sales@hiveandpartners.co.uk  
<https://www.hiveandpartners.co.uk/>



HIVE